



**PANTERA  
PROPERTY**

10 North Park Road  
Harrogate  
HG1 5PG

Suite 3, 46 Crawford Street  
London  
W1H 1JU

0330 118 6610  
office@panteraproperty.com  
www.panteraproperty.com



## 25 Hillsway Crescent

Mansfield, NG18 5DR

- Semi-detached house
- Off street parking
- Three-bedrooms
- Freehold
- Gardens
- No onward chain

**Asking price £170,000**

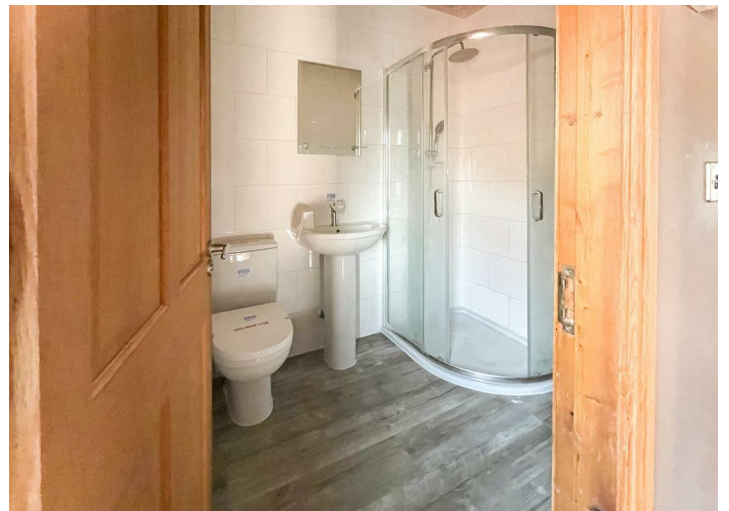
## 25 Hillsway Crescent

Mansfield, NG18 5DR

A three-bedroom semi-detached house offered to the market with no onward chain. The accommodation is arranged over two floors providing an entrance hall, open plan reception and dining room and kitchen to the ground floor. To the first floor, there are three bedrooms and a bathroom. Externally, there is a large lawned and patio garden to the rear. To the front, there is a garden and a driveway providing off-street parking.

The property is owned on a Freehold basis and offered to the market with no onward chain.





These particulars, whilst believed to be accurate are set out as a general outline only for guidance and do not constitute any part of an offer or contract. Intending purchasers should not rely on them as statements of representation of fact, but must satisfy themselves by inspection or otherwise as to their accuracy. No person in this firm's employment has the authority to make or give any representation or warranty in respect of the property.

Energy Efficiency Rating		Current	Potential
Very energy efficient - lower running costs			
(92 plus) A			85
(81-91) B			
(69-80) C		67	
(55-68) D			
(39-54) E			
(21-38) F			
(1-20) G			
Not energy efficient - higher running costs			
England & Wales		EU Directive 2002/91/EC	



**PANTERA  
PROPERTY**

10 North Park Road  
Harrogate  
HG1 5PG

Suite 3, 46 Crawford Street  
London  
W1H 1JU

0330 118 6610  
office@panteraproperty.com  
www.panteraproperty.com

